

# Menu Directed Inspection

## Remote Visual Inspection

### Guided Inspection Software



Menu Directed Inspection (MDI) from GE Sensing & Inspection Technologies is the first software tool to standardize the inspection process in the NDT industry. An XLG3™ or XL Go™

VideoProbe® system operating MDI software helps guide inspectors through the inspection process and intelligently auto-generates a report—saving time, improving quality and increasing productivity.

#### Benefits

- Decrease reporting time upto 70%
- Increase speed and ease of sharing data
- Reduce errors with guided inspections
- Eliminate post inspection reporting with “click-to-report”
- Export data compatible with GE Sensing & Inspection Technologies’ Rhythm® software—a powerful NDT data management platform



### The Value of MDI

There is hidden cost to create reports. For example, a typical report can take four hours to insert and format images. Through MDI, significant cost is eliminated.

	Manual	MDI
Cost Per Report	4 hrs x \$120/hr = \$480	0.5 hrs x \$120/hr = \$60
Reports Per Year	65	65
Annual Total Cost	\$31,200	\$3,900
Savings Per Inspector = \$27.3K		



# Features

## Standardized Inspection List

- Inspectors select from standard list to describe images
- Support engineers and asset owners receive reports with standard descriptions

## Consistent Reporting

- Provides on-site inspection report in Word® format
- Automatically generates report with images and context
- Eliminates after-the-fact reporting
- Controls look, feel, and descriptions for specific inspections

## Data Management

- Centralized, accessible asset health intelligence
- “Tagged” data available for archiving, trending, searching, and analysis
- Eliminates manual consolidation of images and handwritten inspection data

## Remote Expert

- Saves time and money by getting information to inspection experts
- Quickly retrieves archived information using search criteria
- Easily shares large amounts of visual images

## DICONDE

### (Digital Imaging and Communications for NDT)

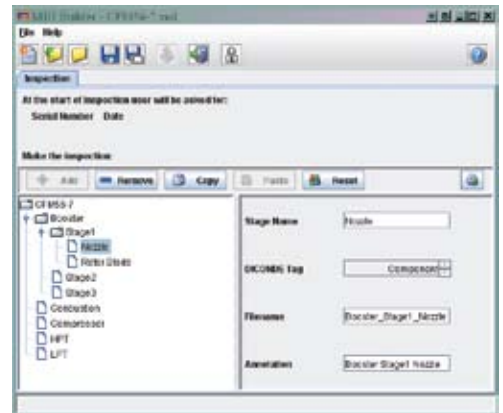
- MDI output is compatible with Rhythm® Acquire
- ASTM DICONDE industry standard format (non-proprietary) for maximum capability and flexibility for customers

## Additional Software\* for Enhanced Productivity



- **Rhythm Acquire** - Creates and uses inspection lists and automatically generates reports from multiple image sources
- **Rhythm Review** - Accepts data from Acquire or other Review Workstations. Provides tools for analysis, reporting, and data storage.
- **Rhythm Archive** - Delivers complete scalable DICONDE storage solutions

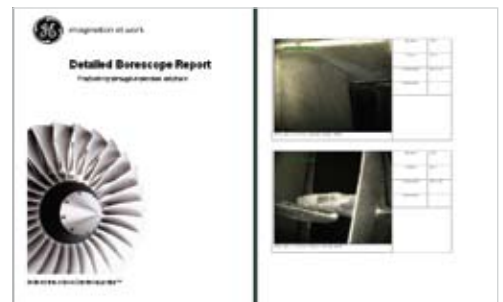
\* sold separately



Sample screen of inspection list to be entered with simple program on a PC, XLG3™ or XL Go™ system. Defines annotation and data tags.



Sample inspection list selection screen



Automatically generated report. File names and descriptions of image source are known.

[www.geinspectiontechnologies.com](http://www.geinspectiontechnologies.com)

GEIT-65032EN (11/08)