

# ROVVER® 400

Advanced camera, lighting and transport technology in one rugged inspection unit – the ROVVER 400 Robotic Crawler from Everest VIT®



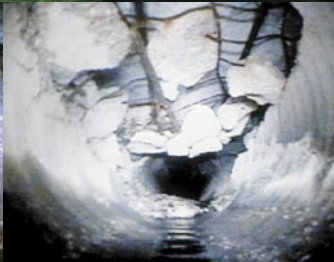
Crawler with axial camera head and auxiliary lights on top

## APPLICATIONS

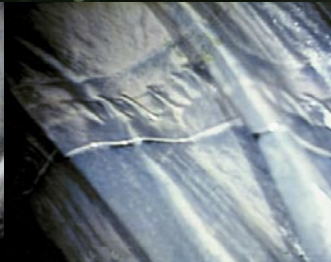
- Air ducts and electrical conduits
- Lube oil and steam lines
- Steam headers
- Small pressure vessels and tanks
- Loose-parts retrieval



Service Water Line  
– Baseline Inspection



Concrete Pipe – Collapse



Lining Evaluation

A compact yet powerful inspection tool, the ROVVER 400 robotic crawler is valued around the world for its rugged versatility. The ROVVER 400 system features a unique modular design and lighting for maximum adaptability. It provides full-directional viewing in a horizontal pipe or line with its pan-and-tilt or forward-viewing video camera. Both cameras have remote adjustable focus for a clear view at all times.

## A fast, portable inspection solution for a wide variety of industries.

With such a diverse range of features, the ROVVER 400 is an essential tool for virtually any application—from examining underground piping to maneuvering through debris and steam and process lines, to keeping workers safe during search and rescue missions.

The ROVVER 400 packs enough power to inspect:

- Pipes from 100 to 300 mm (4 to 12 in.) inside diameter (ID)
- Restricted piping
- Large offsets
- Protruding pipe taps
- Pipes with many bends

## Distinctive features include:

- Waterproof construction for damp or underwater environments
- Quick disconnect for low maintenance and easy, time-saving operation
- Hand-held pendant for user-controlled lighting, focus, speed and steering
- Color forward and pan-and-tilt camera with remote focus
- Remote viewing up to 200 m (660 ft) from operator
- Lightweight, portable design

The ROVVER 200, ROVVER 600 and ROVVER 900 crawlers are also available for applications requiring various diameters. See our website for more information.



9500-9000 Retrieval Tool Kit

Durable kit that houses a variety of retrieval tools and accessories

 **Everest VIT**  
INC.  
COMPLETELY FOCUSED ON REMOTE IMAGING.™

# Specifications – ROVER 400

## Crawler

**Length:** 247 mm (9.7 in.) with axial camera  
339 mm (13.4 in.) with pan-and-tilt camera

**Width:** 94 mm (3.7 in.)

**Height:** 80 mm (3.2 in.)

**Weight:** 4.5 kg (9.9 lbs.)

**Material:** Nickel plated brass, stainless steel, aluminum

**Drive:** 2 x 20 W DC motor, 6-wheel drive, steerable, speed controls

**Depth Rating:** 1 bar (14.7 psi)—Equivalent to water depth of 10 m (33 ft.)

**Wheel Sets:** Ø 64 mm (2.5 in.) wheels (6) for 100.0 mm or 4 in. pipe  
Ø 86 mm (3.4 in.) wheels (4) for 150.0 mm or 6 in. pipe  
Ø 86 mm (3.4 in.) extended wheels (4) for 175 mm or 8 in. pipe

**Rating:** IP68

## Camera

**Type:** 1/2 in. color CCD camera

**Resolution:** 380,000 pixels, 360 HTV lines of resolution

**Lens:** 4 mm, f1.2, remote focus

**Lens FOV:** 68° x 90° x 100° (V x H x D)

**Focus:** 6 mm (0.25 in.) to infinity (remotely adjustable)

**Dimensions:** Axial - Ø 48 mm (1.9 in.) x 78 mm (3.1 in.)  
Pan (175°)-and-tilt (135°) – Ø 88 mm (3.5 in.) x 192 mm (7.6 in.)

**Rating:** IP68

## Control Unit

**Size:** 420 mm (16.5 in.) D x 343 mm (13.5 in.) W x 292 mm (11.5 in.) H

**Pendant Control:** Left/right steering, crawler speed, light intensity, modular slide-in cards for upgrades/accessories

**Power:** 110/230 VAC, 50/60 Hz CE

**Output:** NTSC composite (EIA-170A) video (PAL available)  
19 inch rack mounted controller is available

**Weight:** 18.2 kg (40.5 lbs.)

## Lights

**Camera:** 10 W, 16 x 0.6 W, halogen

**Tractor:** 40 W, 2 x 20 W, halogen

**Auxiliary:** 40 W, 2 x 20 W, dichroic reflector

**Maximum:** 90 W

## Cable Drum

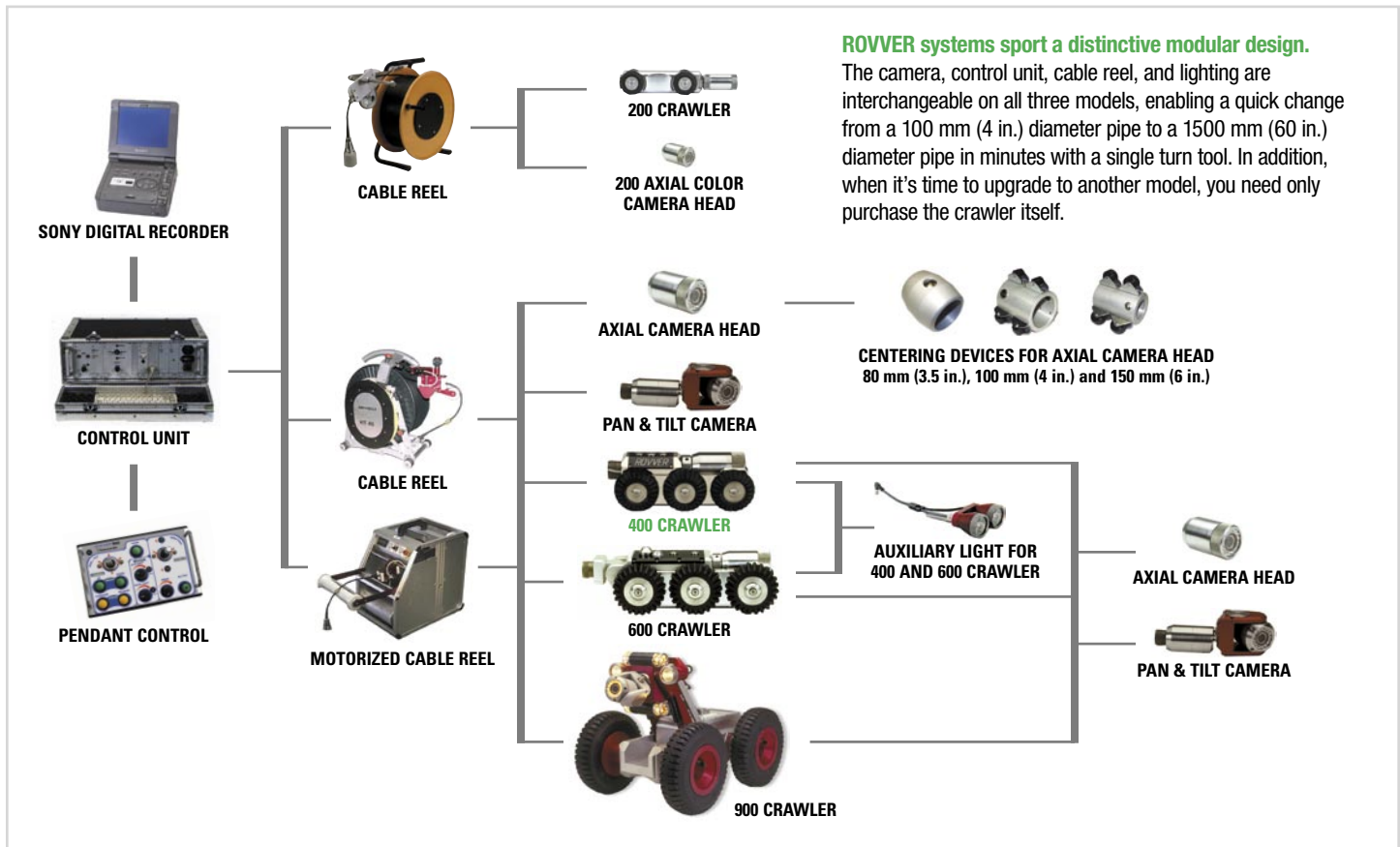
**Cable:** 7 mm (0.28 in.) diameter  
Multi-conductor with 227 kg (500 lbs.) Kevlar® strength member and polyethylene outer jacket

**Length:** Available up to 200 m (660 ft.)

**Drum:** Slip-ring cable drum with various cable length  
*Optional* – automatic motorized cable reel with level wind feature

**Weight:** Approximately 23 kg (50 lbs.) – model, cable length dependant

**Rating:** IP64



## ABOUT EVEREST VIT

Everest VIT is the industry leader in the development of Remote Visual Inspection (RVI) equipment, sales, on-site service, rentals and training. RVI provides viewing capabilities from a remote location, enabling companies around the world to inspect machinery, facilities and infrastructure in the safest, quickest and most cost-effective manner possible. Everest VIT's innovative products have been used to streamline the inspection process in all industries where safety, security and accuracy are of paramount concern, such as aviation, power generation, processing, manufacturing, law enforcement and infrastructure.

[www.everestvit.com](http://www.everestvit.com)

To schedule a product demonstration or to find out more:

Equipment Sales: 888-332-EVIT (3848)

Rentals & Inspection Services: 800-979-24X7 (2497)

Direct: 973-448-0077 • Fax: 973-448-0044 • Locations around the world

